

Make your own Maze

Have you been in a maze and tried to find your way out?



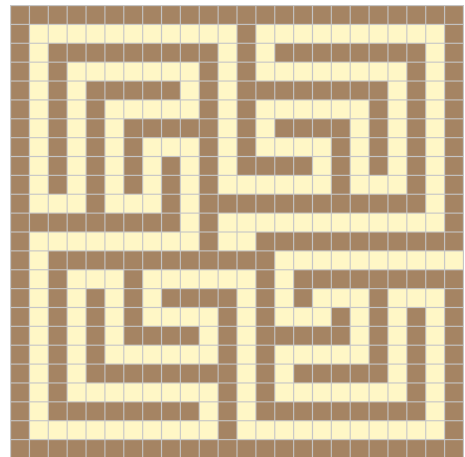
The earliest mazes and labyrinths we know of were found in Egypt and in Crete, and made over 4000 years.

Mazes are still very popular today, with many large ones found in the grounds of parks and stately homes.

You can make your own maze by using square paper.

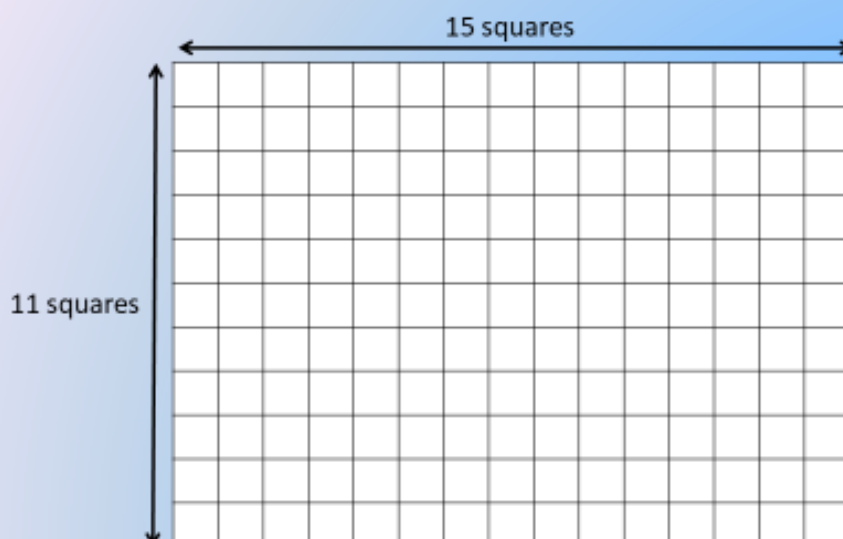
You will need:

- some squared paper
- a pencil
- a good rubber
- a ruler



1.

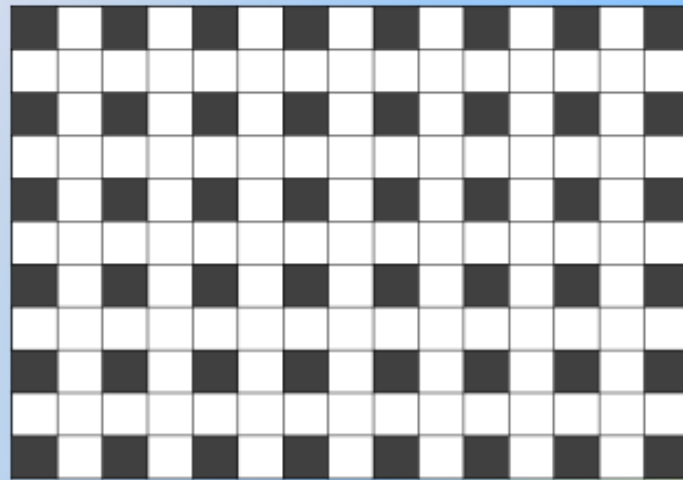
Using squared paper and a pencil, draw out a rectangle with an **odd** number of squares on each side, e.g:



2.

Then, using your pencil, **heavily** shade in alternate squares on every other row..

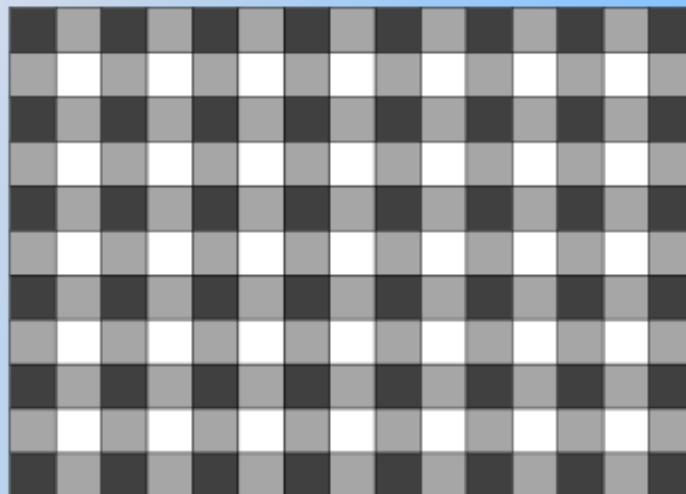
These squares will become part of the walls of your maze.



3

Next, **very lightly** shade in the next set of alternate squares, but on every row this time.

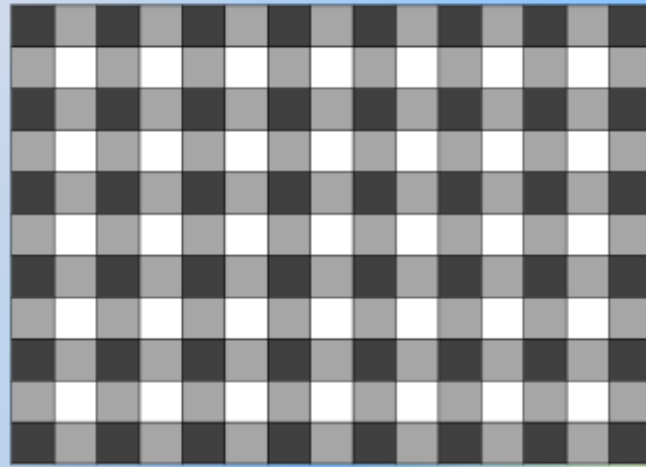
These squares will either be part of the paths, or part of the walls.



4.

Next, ***very lightly*** shade in the next set of alternate squares, but on every row this time.

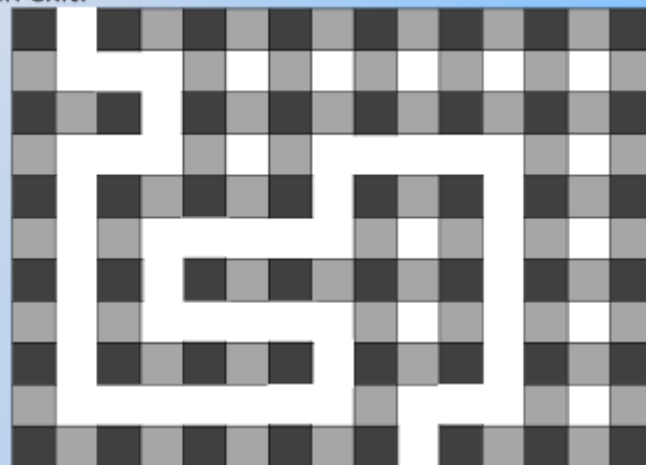
The white squares will be part of the paths.



5.

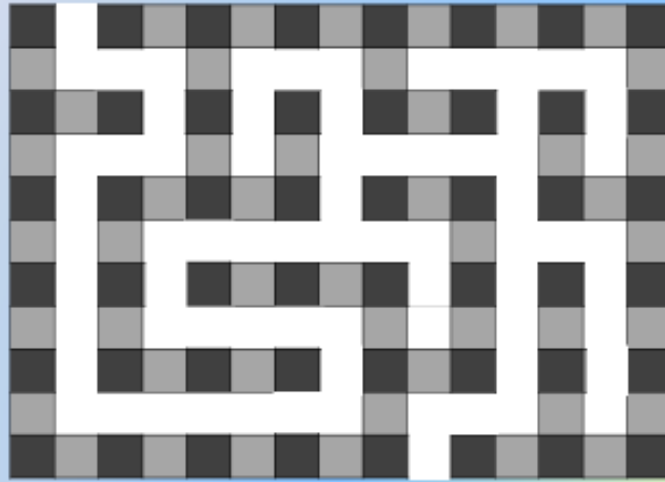
Time to create the path! Make an entrance by erasing one of the lightly shaded squares on the edge.

Then continue erasing lightly shaded squares to make a winding path to an exit.



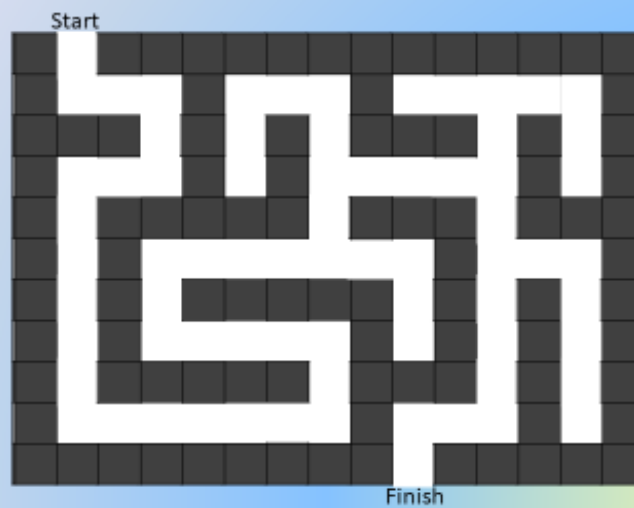
6.

Now to fool people. Start creating new paths coming off this first path, but make them lead to dead ends.



7.

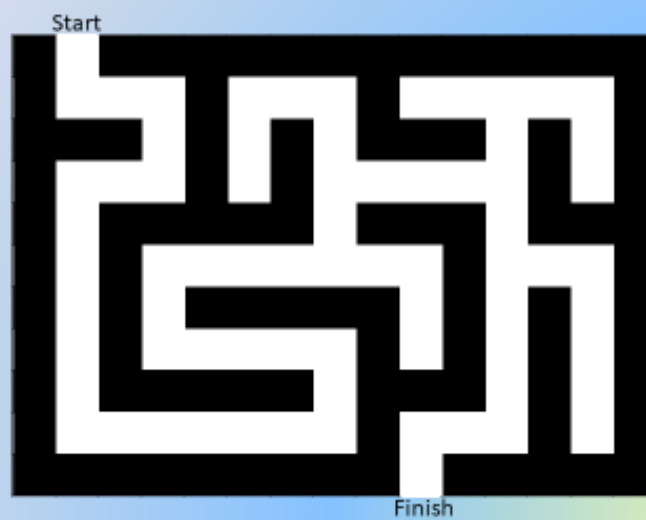
Next heavily shade in the remaining lightly shaded wall squares. Finally label the entrance and exit.



8.

Your branching maze is complete! Now to test it on unsuspecting victims 😊

The larger your maze is, the more difficult you can make it...



Challenge as many grown-ups as you can, did they find their way out of your maze?