

# FAMILY NEWSLETTER

24TH MARCH 2023



There is lots still happening at Ellen Tinkham even though we're reaching the end of the term. The Careers & Transitions Fair was a great success with opportunities for pupils and families to meet different education and social care providers.

Red Nose Day was good fun and we're looking forward to seeing our lower school families at Hollow Lane next Wednesday when you are invited to join us for a hot drink before visiting the classrooms.

**Nikki**

## BIT OF A SUMMARY

**SEND Improvement Family Sessions** - Book your place and have a say!

**Online Safety Training** - this Wednesday at 1.30 pm at ETC.

**Lego Donations** - if you have any spare, we'd love it please!

**Post 16 Transport and Bursary** - when our pupils move into Post 16, automatic School Transport stops and families need to apply and pay for a "vacant seat". Letters coming out shortly from Transport.

**Photo ID** - you must now take photo ID with you when you wish to vote at the polling station.

**Changes to Adult Services** - there are changes happening with Adult Services ie centres closing etc. Have your say on consultations available on DCC's website.

**Free School Meal Vouchers** - heading your way for Easter and the May half term holiday.

**New Menus** - now available on our website.

**Phonics Training for Families** - book your place! 19th April.

**Parent Zone** - take the survey to help Parent Zone create relevant and effective media learning resources for our children and young people.

**DIAS Training Sessions** - learn all about EHCP reviews and demystifying SEND. Book your place now.

**CEA Cinema Card** - apply for a card. Cost = £6.

**Hearing Guides** - helpful tutorials on DCC's website.

**HAF Programme** - book your place and request support with funding, if needed.

**Invites into Hollow Lane and ETC (Lower Seniors families)**

## WHAT'S COMING UP

**Wednesday 29th March:**

- Hollow Lane families invited into school from 12.30 pm onwards
- British Science Day
- Easter Raffle Draw at 12 noon
- Online Safety Training at ETC at 1.30 pm

**Thursday 30th March:**

- Lower Seniors families invited into College from 12.30 pm onwards
- PTFA catch-up at 1 pm at ETC
- Lower Seniors Art Exhibition (pm)

**Friday 31st March:**

- Tinkham's Got Talent at ETC (pm)
- Last day of term

**Tuesday 18th April:**  
Pupils return to school

**Wednesday 19th April:**  
Phonics Training at Hollow Lane, 1.30-2.45 pm



### **Booking now open for SEND improvement family engagement sessions**

Devon County Council is inviting all parent carers of children and young people with SEND to join them to discuss how they can improve SEND provision across the local area both now and in the future.

You can now book a place at one of the sessions this March and April:

- [South Brent Old School Community Centre: Thursday 30 March, 10am to 12pm](#)
- [Bishops Nympton Parish Hall: Monday 24 April, 11am to 1pm](#)

These sessions are the first set in a series Devon County Council will hold throughout the year. They will also be organising a virtual version for people who are unable to attend in person.

### **What will the sessions cover**

- The sessions will include service leads from NHS Devon, Devon County Council and Children and Family Health Devon.
- We will outline the actions in the Devon SEND Improvement Plan, before breaking into groups to discuss how we can all work together with parents to deliver it. You can read a summary of the [draft improvement plan on the SEND Local Offer website](#).
- We are here to hear and learn from your experiences.

Unfortunately, we will not be able to supply updates on individual casework on the day. However, we will signpost and share contact details of people that can help.

### **How to get involved**

You can book your place at a session on Eventbrite using the links above.

## EASTER RAFFLE DRAW



Thank you so much to those who have sent in donations for our Easter "Sweet Treats" raffle.

Please don't forget to return your raffle ticket stubs, monies and any unused tickets back to the office.

We'll be making the draw at 12 noon on Wednesday 29th March!

## E-SAFETY



### SPEAK

to somebody if you need help.



### ASK

an adult before going online.



### FRIENDS

are real people we know.



### ENJOY

Play, have fun and stay safe.



On Wednesday, 29th March, we will be holding another training/information session on the best way to support your child or young person when they are online. Topics included social media settings, information about gaming and conversations you may wish to have with your child or young person around their amount of "screen time".

If you would like to attend, please complete the Form by clicking [here](#). This session will start at 1.30 pm at the College. All our families from across the school and College are very welcome to attend.

## LEGO



If you have too many pieces of lego at home, or your young person no longer plays with lego, please could you consider donating some to us? We would LOVE more lego in school! Thank you very much.

## POST 16 TRANSPORT AND BURSARIES - FOR YOUR INFORMATION



When a young person moves from secondary education into Post 16, free DCC School Transport stops. This happens to all students who travel to school on DCC Transport, whether they are in mainstream settings or SEN schools. To be able to gain a Post-16 seat on a DCC vehicle, families need to apply for a 'vacant seat'. If there is a 'vacant seat' available and the application is successful, families will need to pay for this. At this point, families can apply to our 16-19 Bursary Fund if they are unable to meet the costs themselves. Letters regarding the above are usually sent by DCC School Transport around this time of year, so please keep a look out.



### **What are the new photo ID rules?**

The UK Government has introduced a requirement for voters to show photo ID when voting at a polling station in some elections. This new requirement will apply for the first time in England at the local elections on Thursday 4th May.

### **What are the new photo ID rules?**

The UK Government has introduced a requirement for voters to show photo ID when voting at a polling station in some elections. The new rules will apply to:

- Local elections
- Police and Crime Commissioner elections
- UK parliamentary by-elections
- Recall petitions

In Devon, there are district and city council elections on Thursday 4th May, so you will need an accepted form of photo ID if you want to vote in person.

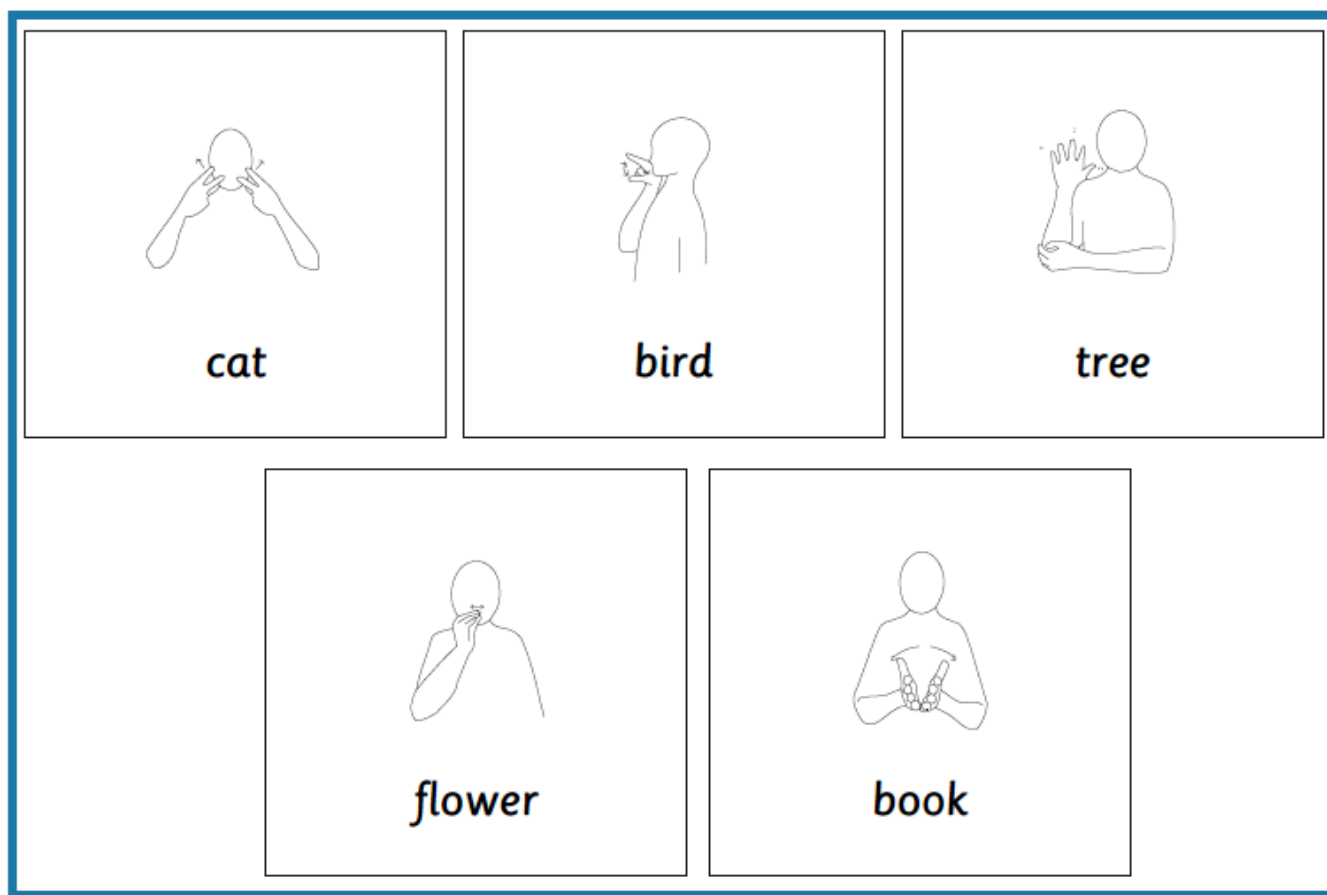
### **What forms of photo ID can I use to vote?**

Remember to take one of these forms of ID with you to show at the door, otherwise you may not be allowed to vote:

- a passport issued by the UK, any of the Channel Islands, the Isle of Man, a British Overseas Territory, an EEA state, or a Commonwealth country
- a photographic driving licence issued by the UK
- a biometric immigration document
- an identity card bearing the Proof of Age Standards Scheme hologram
- a Ministry of Defence Form 90 (Defence Identity Card)
- a Blue Badge
- a national identity card issued by an EEA state
- an Older Person's Bus Pass
- a Disabled Person's Bus Pass
- a Freedom Pass
- an Oyster 60+ Card

You can use your photo ID if it's out of date, as long as the photo still looks like you. The name on your ID should be the same name you used to register to vote.

## MAKATON SIGNS



## CHANGES TO SERVICES FOR ADULTS



Are you aware of DCC consultations on their "Have Your Say" webpage?

For example, there are proposed changes for the Respite services and Day services for adults with learning disabilities at New Treetops, Pine Park (Honiton) and Nichols Way?

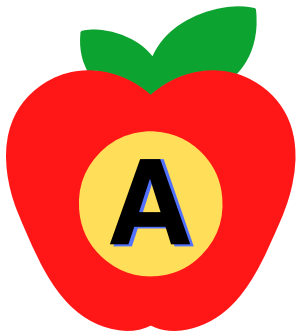
[Adult Social Care Archives - Have Your Say \(devon.gov.uk\)](https://www.devon.gov.uk/adult-social-care-archives-have-your-say)

There are concerns that reduced services might impact on future families who have children who are not yet adults, but might need the support in the future. If you feel strongly about this subject, and not just for the services mentioned above, make sure you have your say and also support [Mencap](#) who are exploring this [topic](#) right now.

We have been made aware there is no Educational Psychologist support from Devon County Council for the pupils at Hollow Lane or Wayside Crescent until September 2023.

If you wish to view Devon County Council's Educational Psychologist support page on their website, the link is [here](#).

### PHONICS TRAINING FOR FAMILIES - HOLLOW LANE ONLY



Katie Greenhough, our Early Years Lead and English Curriculum Lead, and Lucy Hardacre, our Literacy Lead, are running Phonics training at Hollow Lane on Wednesday 19th April from 1.30 pm - 2.45 pm. The training will be around:

- What actually is Phonics?!
- Why is it important to teach children to read using Phonics?
- Useful strategies for parents and carers

After the event, you are more than welcome to take your child home with you. Just let your Class Teacher and School Transport know beforehand.

If you would like to attend, please [register your place via this Form](#), so we know how many people are coming. Thank you.

### NEW MENU AFTER EASTER



South West Norse have provided the new menus which will come into effect after the Easter break.

The new menus and allergen information can be found on our website:

[Healthy Eating | Ellen Tinkham School](#)



## FREE SCHOOL MEAL VOUCHERS



Free School Meal vouchers will be heading your way week commencing 27th March 2023. You will receive £45's worth of vouchers (£30 for the Easter Break and £15 for the May half term holiday).

## FOOD WASTAGE



37,000 tonnes of food across Devon is being thrown away, and much of it hasn't even been opened!

Shocking [new figures reveal that over a quarter of what we put in our 'black bin' waste is food](#) – and much of it unopened!

Although most of us have a food waste collection, a recent study of Devon's black rubbish bins found around 28% of the contents was food, almost half of which was still in its original packaging.

The study also found large amounts of plastic and paper were being put into black bins that could have been recycled if it had been put into the correct kerbside container.

With the cost-of-living crisis continuing, reducing food waste and making food go further is one area that can help keep household expenses down.

[Visit the Love Food Hate Waste website](#) to take a short quiz and receive personalised advice to help you make more of the food you already have to save time and money in the kitchen.

And if food waste is unavoidable, it is much better to put it in the food waste collection for processing into valuable energy and fertiliser rather than throwing it away for costly incineration. If all the recyclable waste was recycled, it would save £3.9 million in Devon, which could be spent on other much needed services.

## PARENTZONE - SURVEY



**Link to survey**  
[here](#)

Parent Zone is currently gathering information to help create resources that can support a media literacy education for children with speech, language and communication needs. This will help children and young people learn important skills for engaging confidently and safely with life online. Would you like to complete an online survey to help inform Parent Zone on the way they design and evaluate resources and services?



DiAS parent training session dates are now live for the Summer term. Book your place now. All sessions are online and free of charge.

### **Demystifying SEND**

Demystifying SEND information sessions for parents and carers of children with SEND, about how to find clear information and support.

**Tuesday 25th April 2023 = 10.30-12.30**

To book a session please follow the link to [Eventbrite](#).

### **EHCP Review Mythbusting**

Have you got an annual review of your child's EHC plan coming up? Then come along to a EHC Plan Reviews – Myth busting parent session and find out what you need to know and do.

**Wednesday 3rd May 2023 = 10.30-12.30**

To book a session please follow the link to [Eventbrite](#).

### **Listening to your Child's Views**

An online session about helping a child with SEND express how they feel about school.

**Tuesday 9th May 10.30-12.30**

Book a place on this event on [Eventbrite](#).

## CEA CINEMA CARD



The CEA Card is a national card scheme developed for UK cinemas by the UK Cinema Association (UKCA). It enables a disabled cinema guest to receive a complimentary ticket for someone to go with them when they visit a participating cinema.

The Card is also one way for cinemas to make sure they look after their disabled guests. If you require an adjustment to visit a cinema because of your disability, cinema staff should make them for you whether you have a CEA Card or not.

To apply for a card costs £6. Click [here](#).



## HEARING GUIDES



Devon County Council Hearing Impairment Team has produced these really useful guides about using your devices:

- Listening check of a hearing aid using a stetoclip
- Changing hearing aid batteries
- Using Phonak Roger touchscreen
- Using a Phonak Roger Inspiro transmitter
- Retubing an earmould
- Muting and unmuting a Roger Inspiro transmitter

Find the videos here and watch them on YouTube: [Using your devices – video guides – Support for schools and settings \(devon.gov.uk\)](#).

## HOLLOW LANE CLUB - SUMMER 2023



The Hollow Lane Club is still trying to recruit staff for the Exeter Summer Club. If you know of anyone that may be interested in working for us, please ask them to email [admin@hollowlane.org.uk](mailto:admin@hollowlane.org.uk) Thank you.

You'll be hearing shortly about Summer Club places (if you haven't heard already!).

## HOLIDAY ACTIVITIES AND FOOD PROGRAMME (HAF)

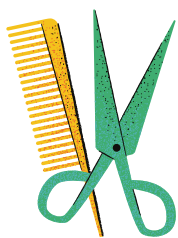


The Holiday Activities and Food (HAF) programme is delivered by a number of different individuals and organisations across Devon.

To access the programme, [you need to book a place through one of the providers](#). All clubs will be operating for a minimum of four hours, including a hot meal. Please note that booking details differ depending on each provider. The schemes are fully inclusive and accessible, so please discuss your child's needs with your chosen provider.

**There is now additional funding available from Devon to support providers when accepting SEN pupils. If you have had difficulty in the past with booking a place, please re-try and ask the provider to request the additional funding available to them to support your child.**

## HAIRCUTS IN EXETER



For many of our pupils, having their hair cut causes a lot of anxiety. Do you know of a good hairdresser in Exeter who works wonders with your child/young person?

If so, please could you pass on their name/contact details to Jo Ellis, our Early Help Lead. Thank you.  
[jo.ellis@ellentinkham.devon.sch.uk](mailto:jo.ellis@ellentinkham.devon.sch.uk)

## TINKHAM'S GOT TALENT IS BACK!



On Friday 31st March, the College is hosting another "Tinkham's Got Talent" show. Selected students have chosen to take part and their families will receive a personal invitation to come into College to watch.

All students across the College are invited to cheer on their favourite acts and bring in £1 for a special "snack box" consisting of popcorn and a drink. The money from this will go towards the Devon Air Ambulance - the chosen charity of students who are undertaking their Duke of Edinburgh Award this year. It will be a fun afternoon!!

## EASTER INVITATION FOR HOLLOW LANE



**WE WOULD LIKE TO INVITE ALL OUR  
HOLLOW LANE FAMILIES INTO SCHOOL ON  
WEDNESDAY 29TH MARCH 2023 FROM  
12.30 PM ONWARDS.**

**PLEASE LET YOUR CLASS TEACHER KNOW IF  
YOU WILL BE ABLE TO VISIT.**

**12.30 pm - 1.45 pm @ Hollow Lane** - all families are invited into the School Hall any time from 12.30 pm to enjoy a hot beverage and an opportunity for a chat.

**From 1.45 pm** - classes will collect you from the Hall to make your way to your child's classroom to join in with their afternoon activity. You are more than welcome to take your child home at the end of the day if you wish - just inform School Transport beforehand.



**WE WOULD LIKE TO INVITE OUR  
LOWER SENIORS FAMILIES INTO  
COLLEGE ON THURSDAY 30TH MARCH  
FROM 12.30 PM ONWARDS**

**From 12.30 pm**

You are welcome to bring in your lunch, we will have coffee and tea available and there will be an opportunity for you to meet and have a chat with other families in relaxed surroundings.

At about 1 pm, we will have a quick ET PTFA update on what's happened/happening across Ellen Tinkham which you are more than welcome to sit and listen to!

**From 1.45 pm**

Classes will collect and escort you to the Lower Seniors Arts Exhibition which is taking place in the Hall. If you wish to take your young person home at the end of the day, please inform School Transport beforehand. Thank you.

**ETC = OPTIONS EVENT AND CAREERS & TRANSITIONS FAIR**

Sending out a huge thank you to our ETC families who supported and attended our Options Event and Careers & Transitions Fair this term.

We hope you found it useful and thank you for your valuable feedback on how we can improve future events and Fairs of this nature.

**AUTISM FRIENDLY SHOWING**

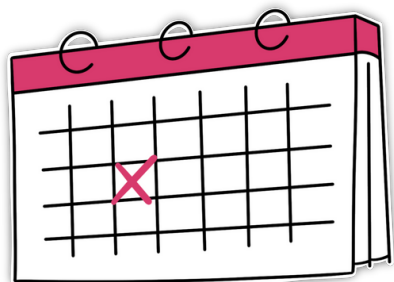


**SUNDAY 2ND APRIL - ODEON EXETER -  
AUTISM FRIENDLY SCREENING - 10 AM**

Rated 12A, the new Dungeons and Dragons film is out this weekend!

Click [here](#) to book your seats!

## NEXT PTFA MEETING



Join us this **Thursday, 30th March** from **12.30 pm** at **the College, Wayside Crescent**. Bring your lunch, we'll pour you a tea or a coffee and you can meet and chat with other families and friends. At 1 pm, we'll be having a catch-up on what's happened in the run up to Easter, what's happening next term and beyond.

## DID YOU KNOW?

As well as organising the **Easter Raffle** this year, the PTFA is also purchasing an **Easter gift** for all our students. This can only happen because of the generous fundraising by you, our families.

Will Young and his outdoor education team have also benefitted from PTFA monies recently with the purchasing of **equipment for our Ten Tors team**, part of May's Jubilee Challenge weekend.

**Lilac Class** has also requested and received money to purchase much needed storage boxes and **new learning resources** for their pupils.

None of this would have happened without you, but we really do need more members on the PTFA so that even more fundraising opportunities can be explored so that even more money can be raised and put back into the education and enjoyment of our children and young people.

Can we count on your support? Hopefully we'll see some of you this Thursday from 12.30 pm at the College.





# Walk and Talk SEN families

In and  
around  
Exeter

Meeting at 3pm on the first Sunday of each month

For more information and meet locations, please contact Sarah on 07875 841301

or Search Facebook for:  Walk & Talk - SEN families

*A place to meet other families on a similar journey*

## ADDITIONAL NEEDS SPORTS GROUP

## SESSIONS



### WEDNESDAY

MUAY THAI @ TWIN TIGERS,  
HONITON  
4-5PM

DANCE FOR ALL @ OTTERY  
ST MARY AFC  
4:30-5:30PM

### THURSDAY

Multi-Skills @  
Ottery St Mary  
AFC  
4:15 - 5:15pm

### SATURDAY

Gymnastics @  
Axminster  
Gymnastics  
2-3pm

### SUNDAY

Football 4 All @ Ottery  
St Mary AFC  
9-10am



## **EXCITING TALENT ID OPPORTUNITIES IN DISABILITY FOOTBALL FOR PLAYERS AND COACHES**

**2023 ENGLAND DISABILITY TALENT DAY**  
**SATURDAY 10TH JUNE**

**10.30AM – 1.30PM**

VENUE: MANADON SPORTS HUB, PLYMOUTH  
ONLINE BOOKING FORM: [HTTPS://FORMS.OFFICE.COM/E/V3NQT5DZSF](https://forms.office.com/E/V3NQT5DZSF)

**FOR PLAYERS AGED 7 – 16 YEARS WITH THE FOLLOWING IMPAIRMENTS:**  
• **CEREBRAL PALSY, PARTIALLY SIGHTED, DEAF**



### **FA PARA FOOTBALL TALENT ID WORKSHOPS – ONLINE AND FREE**

THESE SESSIONS ARE DESIGNED TO GIVE ANYONE INVOLVED IN ALL FORMATS OF FOOTBALL THE OPPORTUNITY TO UNDERSTAND MORE ABOUT THE PARA FOOTBALL PLAYER PATHWAY, WHO WE ARE LOOKING TO IDENTIFY & RECRUIT, AND HOW TO GO ABOUT REFERRING TALENTED PLAYERS.

ONLINE BOOKING FORM: [HTTPS://FORMS.OFFICE.COM/E/XRGWFV3XU5](https://forms.office.com/E/XRGWFV3XU5)



# What Parents & Carers Need to Know about iPADS

Apple debuted the first iPad in 2010, kickstarting the tablet market, and it remains the best-selling tablet to this day. Although Apple doesn't offer a child-specific version, iPads are hugely popular with youngsters due to their ease of use and endless choice of apps. There's a selection of models, with different-sized screens and distinct features – including the standard iPad; the iPad Air; the iPad Pro; and the iPad mini. Thankfully, they all offer parental controls so you can regulate how your child uses the device ... and how long they spend on it.

## WHAT ARE THE RISKS?

### PHYSICAL DAMAGE

While some tablets (such as the Amazon Fire Kids editions) come with rugged shock-proof cases, iPads aren't built for rough and tumble. They're also more expensive than most other tablets, and any damage your child's iPad suffers could be costly to repair. Buying a child-friendly case and screen protector for the device could be a wise move, especially if it's being used by younger ones.

### SCREEN ADDICTION

Like most digital devices, tablets have the potential to become quite addictive. You might find your child spending too long staring at their iPad, which could lead to irritability, mood swings and a loss of interest in more important tasks. If this happens, be sure to visit the built-in screen time settings and ensure you limit how long they're able to spend on the device each day.

### INAPPROPRIATE CONTENT

18  
CENSORED

Even if it would never occur to your child to go searching online for age-inappropriate sites, apps or information, there's always a possibility that something unexpected – perhaps a video that auto-plays or content incorrectly suggested by an algorithm – could appear on their tablet and upset them. You can help prevent this by adjusting the content settings (see our 'top tips' section below).

### SIRI SUGGESTIONS

The parental controls built into iOS (the fundamental operating system of Apple devices) enable you to block access to most age-inappropriate content – but your child could potentially still bypass these restrictions (either accidentally or deliberately) by using Siri, Apple's voice-activated digital assistant. To avoid this, toggle the 'Ask Siri' functions to 'off' in the iPad's settings menu.

## Advice for Parents & Carers

### ENABLE FAMILY SHARING

Before letting little ones loose on an iPad, it's a good idea to set up Family Sharing, as this lets you utilise the parental controls to manage exactly how your child is able to use the device. You can do this fairly easily by going into the iPad's settings; once there, you'll be able to add an existing Apple account (if your child already has one) or set one up from scratch.

### APPLY SOME LIMITS

The 'Downtime' function allows you to tell the iPad to lock itself at certain periods (at mealtimes or before bed, for instance), while 'App Limits' removes access to certain apps once they've been used for a specified length of time each day. The iPad can display a reminder when these limits have nearly been reached, letting your child mentally prepare for the end of their gaming or viewing time.

### STOP ACCIDENTAL SPENDING

To empower your child with an increased sense of freedom on their device (without giving yourself something else to worry about in the process) you could enable the iPad's 'Ask to Buy' feature. Whenever your child tries to download or buy an app, game or product, the iPad sends you a request to approve (or deny!) it. This option only becomes available if you've set up Family Sharing.

### SET CONTENT AND PRIVACY RESTRICTIONS

The parental controls can stop the iPad from displaying explicit or age-inappropriate content (in apps like iTunes and Safari, for instance) when your child is signed into their account. You'll also be able to restrict the capacity to download and install apps, and you can specify permissions which prevent children from changing the iPad's privacy settings once you've selected them.

### TRACK IT DOWN

Just like the iPhone, Apple's iPads have 'Find My' software to help you locate your child's iPad – or indeed, any linked Apple devices that have gone AWOL, including phones, watches and AirPods. If you enable 'Find My' in the settings menu, it will display the last known location of an iPad that's been mislaid, as well as giving you the option to lock a missing iPad that you suspect has been stolen.

## Meet Our Expert

Carly Page is an experienced technology journalist with a track record of more than 10 years in the industry. Previously the editor of tech tabloid The Inquirer, Carly is now a freelance technology journalist, editor and consultant.



**NOS**  
National  
Online  
Safety®  
#WakeUpWednesday